

KM-2560

▶ print ▶ copy ▶ scan ▶ fax

MONOCHROME MULTIFUNCTIONAL FOR A3 FORMAT

TREATS **EVERY PROJECT**
AS A **PRIORITY.**



 **KYOCERA**

NO NEED TO WAIT YOUR TURN.

PREDICTABLY RELIABLE WORKFLOW.

It's easy to get used to not having to wait. With new KYOCERA technology that processes multiple jobs simultaneously, you can safely predict that no one in the office will be on standby. While one person is printing from one corner of the office, another can be scanning. Meanwhile, if someone in another area of the office decides to print, their job is ready to go the moment the first print job is finished.

With KYOCERA, reliability is equally important as productivity. Long-life components and exceptionally hard-wearing KYOCERA drums make it easy to predict that this multi-

functional will work hard to maximise working hours (its, not yours). Less downtime is something everyone in the entire workgroup can get used to. At least until it's time to go home.

Ask anyone in the office, "Whose project is the most important?", and they will all say "Mine!". Luckily there are KYOCERA multifunctionals that can handle all the demands of a networked workgroup. The new KM-2560 makes use of new data-processing technology to allow simultaneous processing of multiple jobs. Now everyone can have their turn at the same time.



Duplex colour scanning

Scan both sides of documents in full colour.

Colour touch panel with thumbnail previews

Intuitive menus with easy-to-view colour thumbnails.

Extra security enhancements

Accommodates extra security requirements for networked environments.

Optional internet fax

Conveniently fax over the internet, directly to a PC.

80 GB document box as standard

A large hard disk lets you save, retrieve and output documents directly from the multifunctional.

Long-life components

Durable components increase longevity and reduce down time.



MULTITASK AND MULTI-SEND ACROSS THE NETWORK.

Not only does this multifunctional allow multitasking, it also allows multiple people to multitask. As if that weren't enough work for one day, it also allows multi-sending. Multi-sending means scans can be sent to different places at the same time. With an integrated address book that holds up to 2,000 addresses, a long list of people can receive the information they require, at precisely the time they need it.

COLOUR TOUCH PANEL WITH THUMBNAIL PREVIEW.

With the potential to do so much at once, you might think it's easy to lose track of what you're doing. That's unlikely with a colour touch panel this large. To increase usability, the buttons and icons that people use most often are given priority. Related menu options are intuitively shown on the same screen. And it's easy to retrieve files stored in the 80 GB document box, without opening files, by simply viewing colour thumbnails and previews.



8.5 inch colour touch panel with on-screen guidance.



Find the perfect viewing angle with the adjustable control panel.

DUPLEX COLOUR SCANNING OF MIXED-SIZED ORIGINALS.



Just because you don't usually print in colour doesn't mean it wouldn't be nice to save documents in colour. The addition of the optional document processor not only allows colour scanning, it allows duplex colour scanning. Even if the original documents are different sizes, simply place them on the tray in one stack and the automatic processor automatically scans them to size.

ACCESSIBLE BY EVERYONE.

A lot of thinking has gone into the inside of a KYOCERA multifunctional, but what about the outside? On the KM-2560 there's been equal attention paid to the interface between user and machine as there has to the tech-

nology inside. These design features give everyone in the workgroup equal access, regardless of their strength or physical ability, and all contribute to better workflow in small but significant ways.

Easy scan access

Makes everyday scanning quick and easy.

Portable paper clip and staple case

Conveniently collect paper clips, or staples for the bin.

Job status LED

Indicates job processing status, paper output and errors.

Easy-to-find output

Dark output trays provide a contrasting background for paper.

Easy-to-open paper cassettes

Ergonomic cassette handles can be pulled from top or bottom and allow a more natural grip.



Cleaning cloth

At hand to keep the glass surface clean.

User-friendly opening angle

Keeps the automatic document processor within easy reach.

Adjustable control panel

Readable in all light conditions, including direct sunlight.

Internal multi-purpose tray

Space-saving cassette for a variety of print jobs.

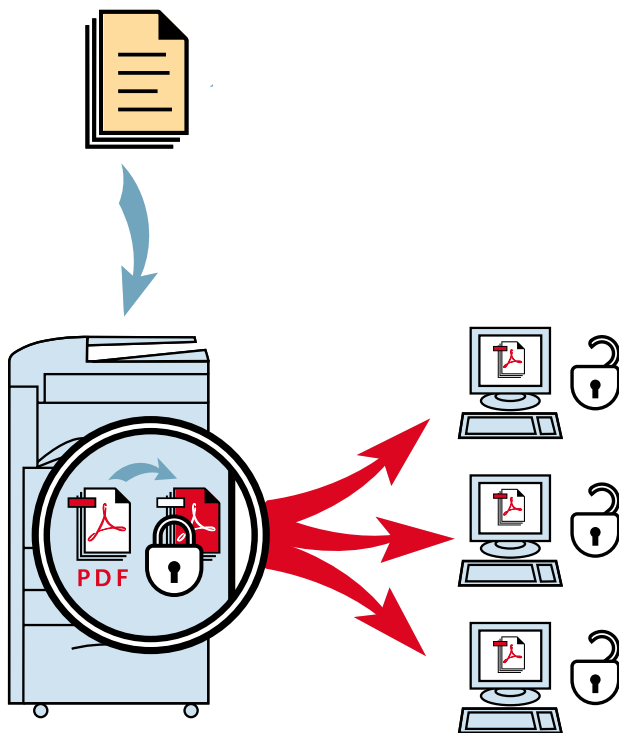


PDF DIRECT PRINTING FROM USB.

In addition to simultaneously processing jobs over the network, there is occasionally the need for non-network printing, perhaps to meet the requirements of guests in the office who aren't on the network. The KM-2560 offers PDF direct printing from USB memory sticks with no need for a PC. It's often the case that direct printing is simply more convenient, especially for spontaneous print jobs. Just step right up and print the information they require, at precisely the time they need it.



Equipped with two USB ports to help ensure one is usually available.



1. Set password when scanning.
2. Key-in password when PDF needs opening.

EXTRA SECURITY ENHANCEMENTS.

The KM-2560 is a security-enabled multifunctional designed for networked environments or for use in isolation within departments that frequently deal with confidential information. It offers IP filtering and security watermarks as standard, as well as optional features that are easy to add for extra security.

Security watermarks are particularly useful for preventing unauthorised copying of confidential documents. When printing, you can choose to automatically embed an invisible pattern in documents that becomes visible when copied. This watermark discourages unauthorised copying and makes it easy to identify whether a document is an original.

With the optional Data Security Kit, information stored on the hard disk such as previous print jobs or details from the address book can be encrypted and then completely overwritten to safeguard data. Individuals can also be given the option to password-protect scanned documents by using the PDF expansion kit. If security is a concern, it needn't be any longer.

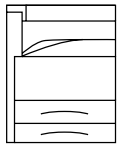
SMALL FOOTPRINT WITH ROOM TO EXPAND.

This compact multifunctional incorporates a large built-in bypass that holds 200 sheets of A4 paper, even when closed. Effectively this means the bypass functions as a

standard third cassette, which completely closes to accommodate awkward placement, such as near a shelf, filing cabinet or wall. In addition to smart features like this, the modular design means you can add paper handling and finishing functionality as needed.

Basic paper handling

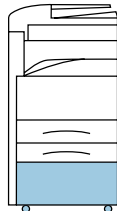
Two 500-sheet paper cassettes and a 200-sheet multi-purpose tray provide a generous paper reserve.



Standard configuration

Optional cabinet

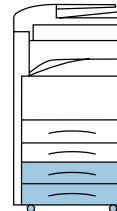
An additional paper cabinet with rollers allows convenient paper storage.



CB-670/CB-671

Flexibility

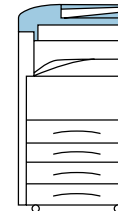
Two additional 500-sheet paper cassettes offer fast, convenient access to multiple paper types.



PF-670

Automatic document processor

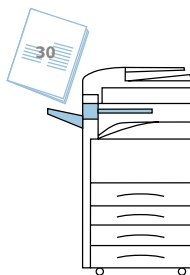
A 75-sheet document processor can scan large stacks of double-sided colour originals.



DP-670

Basic finishing

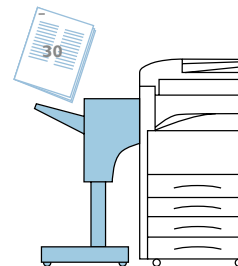
When a finisher is required, but you're short of space, you can add a 500-sheet internal finisher.



DF-670(B)

More advanced finishing

An additional 1,000-sheet finisher staples large stacks of paper quickly and effortlessly.



DF-730

WHEN EFFICIENT ADMINISTRATION IS A PRIORITY.

One single tool is all it takes. Fast and highly efficient, KMnet Admin is a comprehensive, web-based application for device administration. The system supports most network printers, making it ideal for mixed environments. And because it is web-based, administrators can take care of print job management, accounting or even troubleshooting, no matter where they are. And by the way, this highly efficient tool is free of charge for KYOCERA customers.

KM-2560

MONOCHROME MULTIFUNCTIONAL FOR A3 FORMAT

The KM-2560 incorporates extremely durable components that guarantee efficient and reliable operation to meet the demanding requirements of busy office environments. The KM-2560 provides effective productivity and maximises uptime whilst ensuring a minimum impact on the environment.

General

Technology: KYOCERA Laser, Mono component

Engine speed

Max. 25/12.5 pages per minute A4/A3

Resolution

600 x 600 dpi (copy), 1,800 dpi level x 600 dpi (copy, photo mode), 1,200 dpi quality (print)

Time to first copy: 4.7 seconds or less

Warm-up time: 29 seconds or less from power on

Power source: AC 220 ~ 240 V, 50/60 Hz

Power consumption

Printing: 560 W, Stand-by: 160 W, Power-Saving (ECOpower): 8.7 W

Noise (ISO 7779)

Printing/copying: 64.7 dB(A), Stand-by: 47 dB(A), Power-Saving (ECOpower): Immeasurably low

Dimensions (W x D x H)

Main unit: 570 x 620 x 767.2 mm

Weight: Main unit approx. 75 kg

Certifications

TÜV/GS, CE, ISO 15408

This product is manufactured according to ISO 9001 quality standard and ISO 14001 environmental standard.

Paper handling

All paper capacities quoted are based on a paper thickness of max. 0.11 mm. Please use paper recommended by KYOCERA under normal environmental conditions.

Input capacity

2 x 500-sheet universal paper feeder, 60–120 g/m², A3–A5R, folio, 200-sheet multi-purpose tray, 45–200 g/m², A3–A6R, folio, envelopes

Max. input capacity with options: 2,200 sheets

Duplex unit

Duplex as standard supports A3–A5, 60–80 g/m²

Output capacity: 250 sheets face-down

Copy functions

Max. original size: A3

Continuous copying: 1–999

Memory capacity

Standard 512 MB (max. 1 GB) + 80 GB HDD (system-shared)

Zoom range

25–400% in 1% steps (with DP-670: 25–200%)

Preset magnification ratios: 5R / 5E

Digital features

Interrupt output job, scan-once-print-many, electronic sort, rotate sort, rotate copy, N-up copy, split copy, cover mode, page numbering, box image overlay, margin shift, border erase

Exposure mode: Auto, manual: 7 or 13 steps

Image adjustments: Text + photo, text, photo

Your KYOCERA Business Partner:

Print functions (optional)

Processor: PowerPC 750Cxr / 400 MHz

Memory

Standard 512 MB (max. 1 GB) + 80 GB HDD (system-shared)

Emulations

PCL6 incl. P/L, KPDL 3 (PostScript 3 compatible)
Line Printer, IBM Proprinter X24E, Epson LQ-850, Diablo 630

Controller language: PRESCRIBE IIe

Fonts

80 outline fonts (PCL6), 136 PostScript KPDL 3 fonts, 1 bitmap font, 45 types of one-dimensional barcodes plus two-dimensional barcode (PDF-417)
Downloadable fonts: Kyocera, PCL + TrueType format, Type 1 + 3 format

Features

eMPS – for quick copy, proof and hold, private print, job storage and job management functionality

Interfaces

Standard interface: USB 2.0 (Hi-Speed), USB Host Interface dedicated for USB Flash Memory device, Fast Ethernet 10-Base-T/100Base-TX, CF slot

Multiple interface connection (MIC)

Allows simultaneous data transfer via up to four interfaces, with each interface having its own virtual printer.

Scan functions (optional)

Functionality

Scan-to-SMB/FTP, scan-to-email, scan-to-BOX, network TWAIN, BOX TWAIN

Scan speed

50 originals per minute in b/w (300 dpi/A4),
15 originals per minute in colour (300 dpi/A4)
30 originals per minute in b/w (600 dpi/A4),
15 originals per minute in colour (600 dpi/A4)

Scan resolution

600, 400, 300, 200, 200 x 400, 200 x 100 dpi
(256 greyscales, 256 colour)*

Max. scan size: A3

Original recognition: Text, photo, text + photo, OCR

Interface: 10Base-T/100Base-TX

Network protocol: TCP/IP

File types: Mono: TIFF, PDF

Colour: JPEG, PDF, TIFF (JPEG)

Compression format: B/W: G4 (MMR), Colour: JPEG

Bundle software: KM-NET Viewer, TWAIN source

*Colour scanning at resolutions of 400 dpi and above requires additional memory.

Fax functions (optional)

Compatibility: ITU-T Super G3

Modem speed: Max. 33.6 kbps

Transmission speed: 3 seconds or less (JBIG)

Scanning density

Normal: 8 dot/mm x 3.85 line/mm, Fine: 8 dot/mm x 7.7 line/mm, Superfine: 8 dot/mm x 15.4 line/mm, Ultrafine: 16 dot/mm x 15.4 line/mm, SUFine: 600 x 600 dpi

Max. original size: A3

Compression method: JBIG, MMR, MR, MH

Memory: Standard 120 MB (enable fax image back-up)

Features: Internet fax, network fax, rotate transmission, confidential, relay and bulletin board transmission delivery to document box

Consumables

TK-675 Toner-Kit

Microfine toner for 20,000 pages with 6% coverage

Options

Fax System(M)2

Paper handling

DP-670 Document processor: 75 sheets, 45–160 g/m², A3–A5R, folio (RADF), colour scan

PF-670 Paper feeder: 2 x 500 sheets, 60–120 g/m², A3–B5R, letter, letter-R, legal, ledger, folio, STMT

DF-670(B) Internal document finisher: Max. 500 sheets A4 or 250 sheets A3, Folio, 60–105 g/m², one-position stapling max. 30 sheets A4 or 20 sheets A3

DF-730 Document finisher + AK-670*

Max. 1,000 sheets A4 or 500 sheets A3/B4, 64–128 g/m², A3–B5, one-position stapling max. 30 sheets A4 or 20 sheets A3–B4, 64–128 g/m²

JS-670(B) Job separator: 100 sheets internal job separator, 45–160 g/m², A3–A5R

*Adapter-Kit AK-670 is required for the use of DF-730 document finisher.

Memory

DIMM memory: 512 MB memory, DDR-SDRAM DIMM (100 pin): 2 slots (1 slot empty), max. 1 GB

CompactFlash® card

1 slot (up to 4 GB) for forms, fonts, logos, macro storage

BU-10 Back-up memory: 128 MB for fax box image back-up

Security

Data security kit (C)

UG-30: PDF expansion kit (high compression, encryption file)

Optional interface for print functions

PS159: Wireless LAN (802.11b/g)

PS1109 Gigabit Ethernet: 10BaseT/100BaseTX/1000BaseT (RJ-45)

PS129 Fibre Optic: 100BaseSX (SC)

PS1129 Gigabit Fibre Optic: 1000BaseSX (SC)

Others

Platen cover (D)

CB-670 Cabinet: Wooden desk with storage capacity

CB-671 Cabinet: Metal desk with storage capacity



KYOCERA

KYOCERA MITA Europe B.V. – Branch Office Germany – Otto-Hahn-Straße 12 – 40670 Meerbusch – Germany
Tel +49 (0) 2159 928-500 – Fax +49 (0) 2159 918-100
www.kyoceramita-europe.com – info@kyoceramita-europe.com

KYOCERA MITA Corporation – 2-28, 1-Chome – Tamatsukuri – Chuo-Ku
Osaka 540-8585 – Japan – www.kyoceramita.com

** KYOCERA does not warrant that any specifications mentioned will be error-free. Specifications are subject to change without notice. Information is correct at time of going to press. All other brand and product names may be registered trademarks or trademarks of their respective holders and are hereby acknowledged.