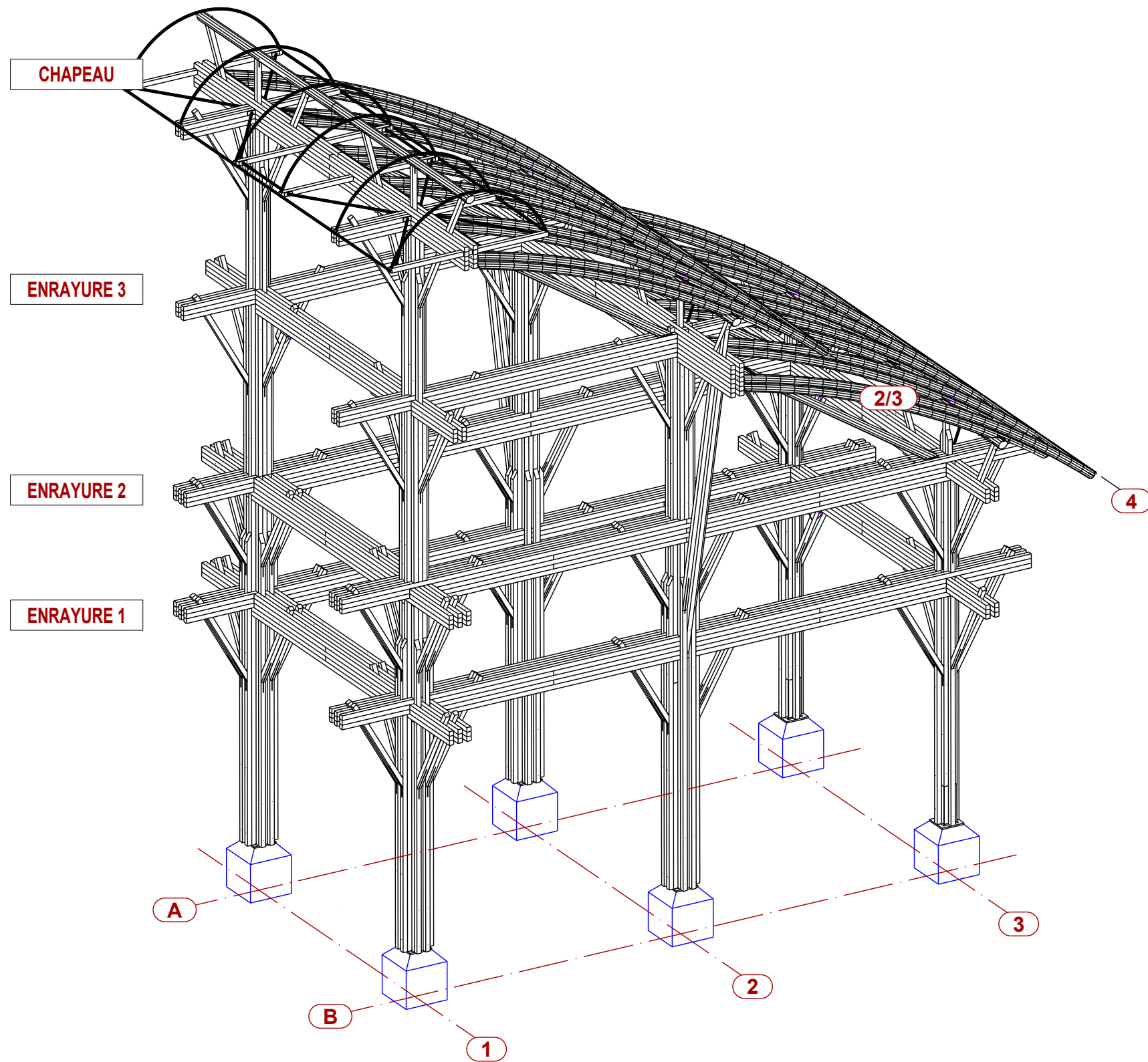
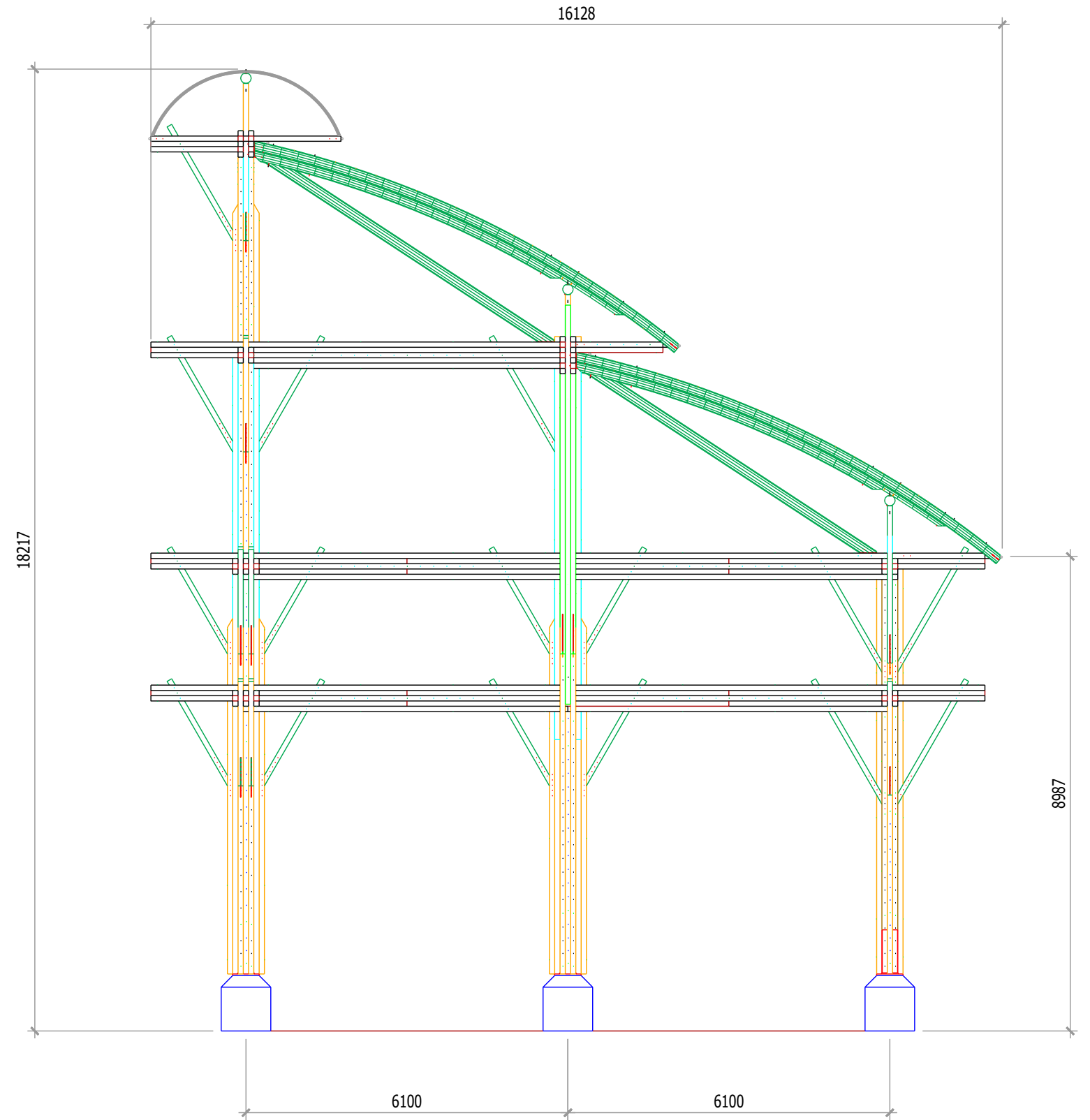
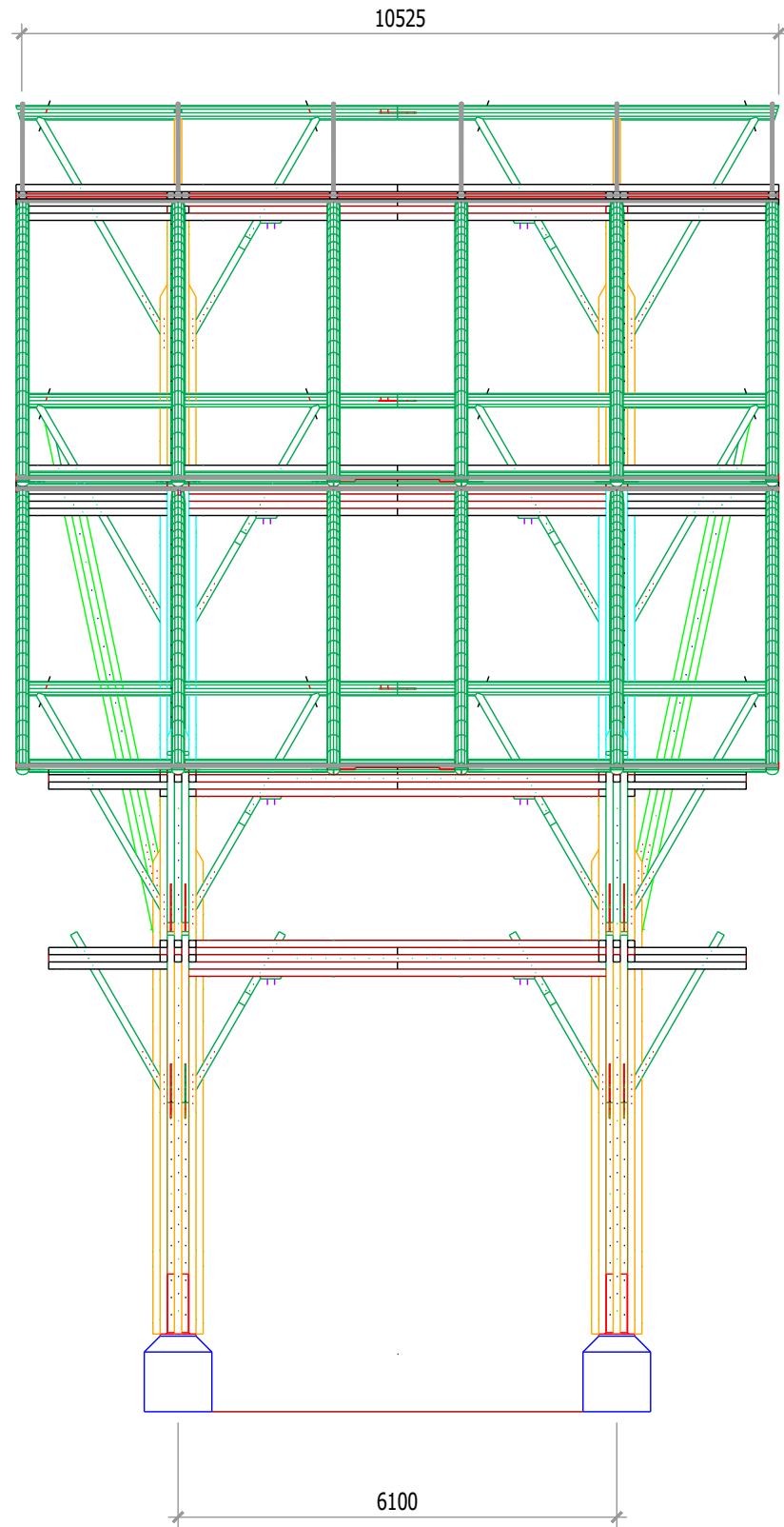
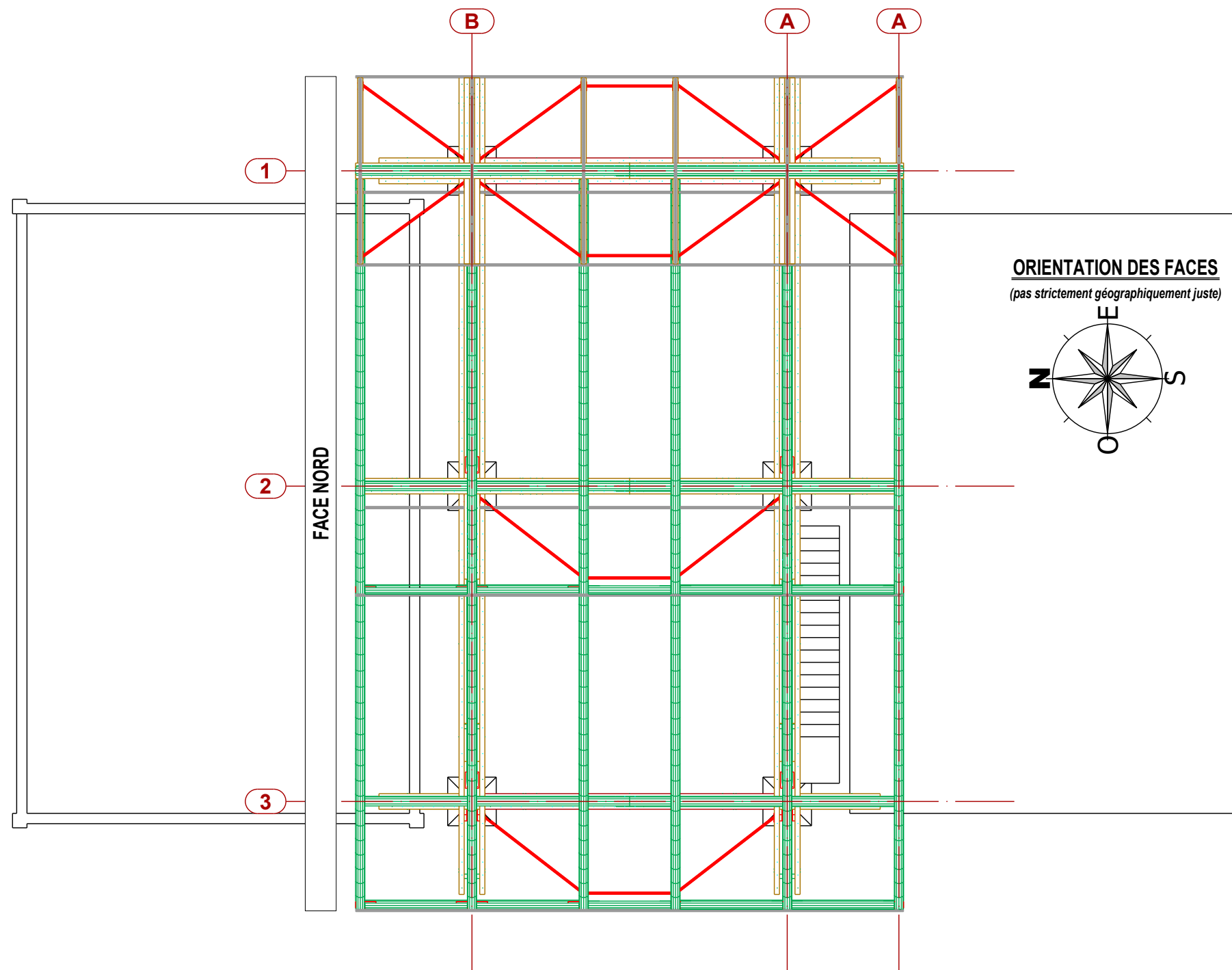


FACE SUD  
 FACE EST  
 FACE OUEST

FACE NORD

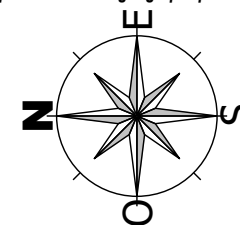


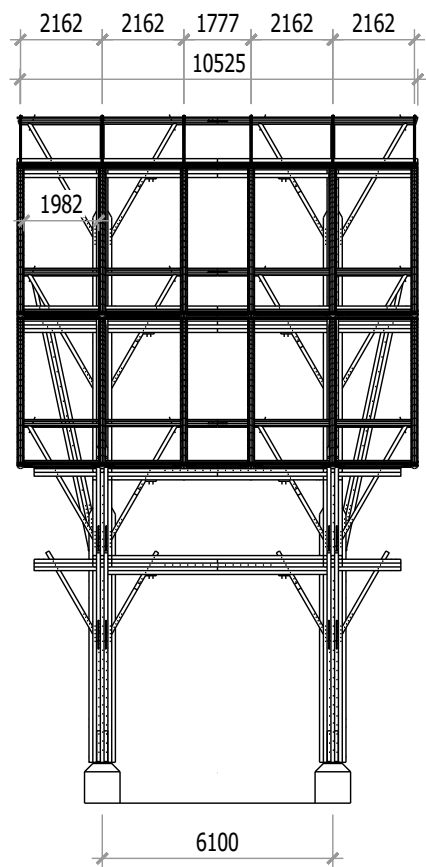




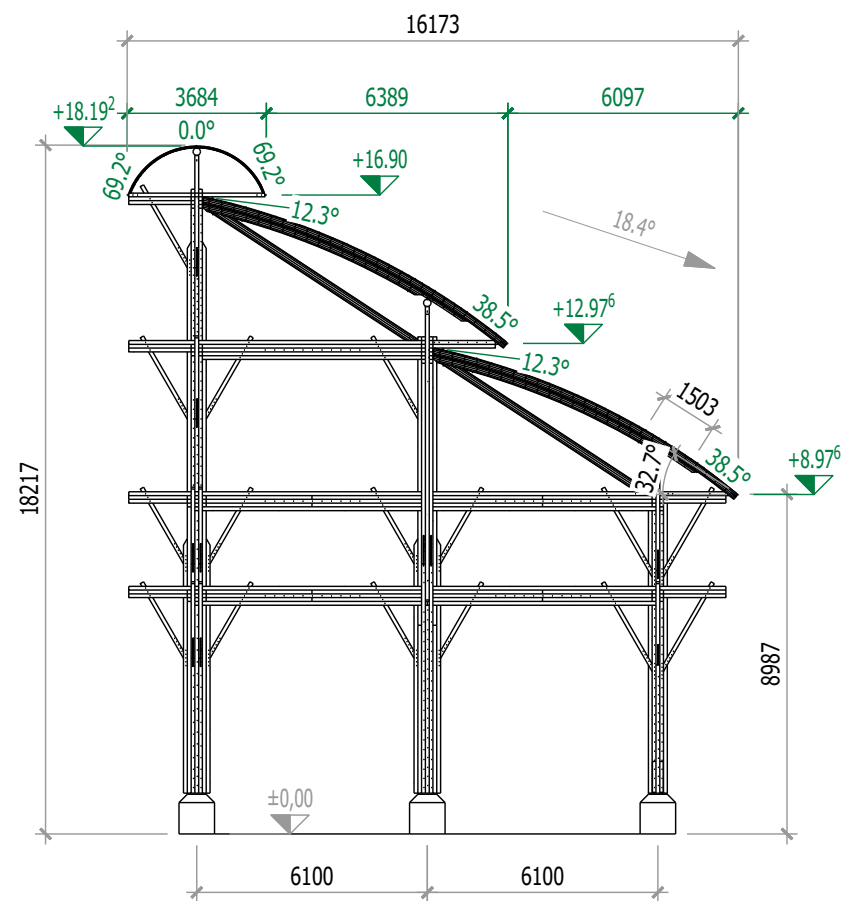
FACE SUD  
FACE EST  
FACE OUEST

ORIENTATION DES FACES  
(pas strictement géographiquement juste)

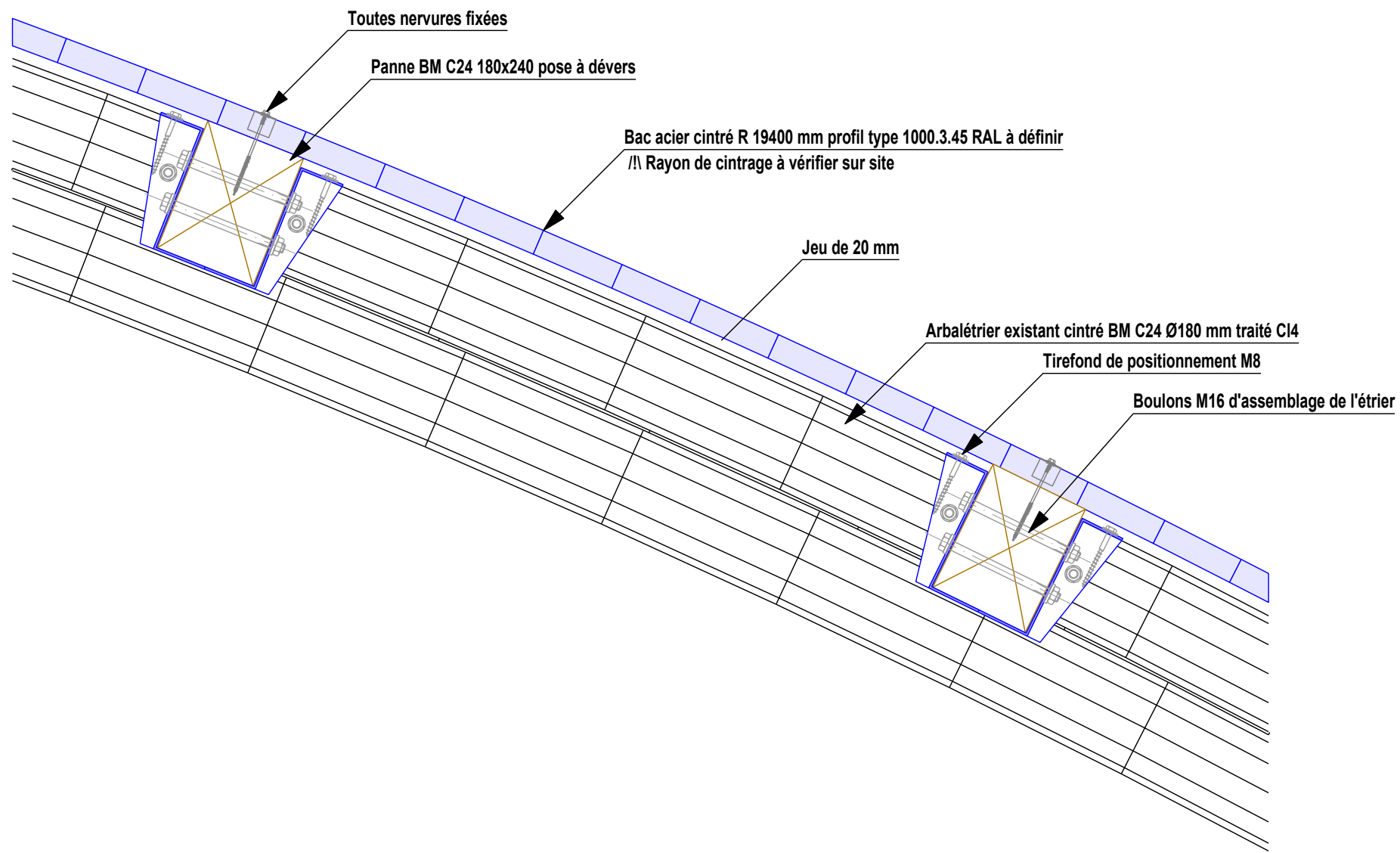




VUE DE FACE



VUE DE COTE



daN/m<sup>2</sup>

8	Bac acier cintré profil type 1000.3.45
12	Panne BM C24 180x240 mm e-a 1400 mm
5	Divers
25	total



